

PRODUCT GUIDE



LIGHTING & ELECTRICAL

Light up your offroad adventure with the largest range of 4x4 vehicle lighting. Opposite Lock provides a selection of high intensity driving and LED lights.





THE LIGHTFORCE STORY...

The extraordinary story of LIGHTFORCE began over 25 years ago with our founder Dr Raymond Dennis (Ray) in the country town of Cleve in South Australia. After searching the retail market for a high quality and robust spotlight to use on his property and finding nothing suitable, he decided to build one himself ... and the rest, as they say is history.

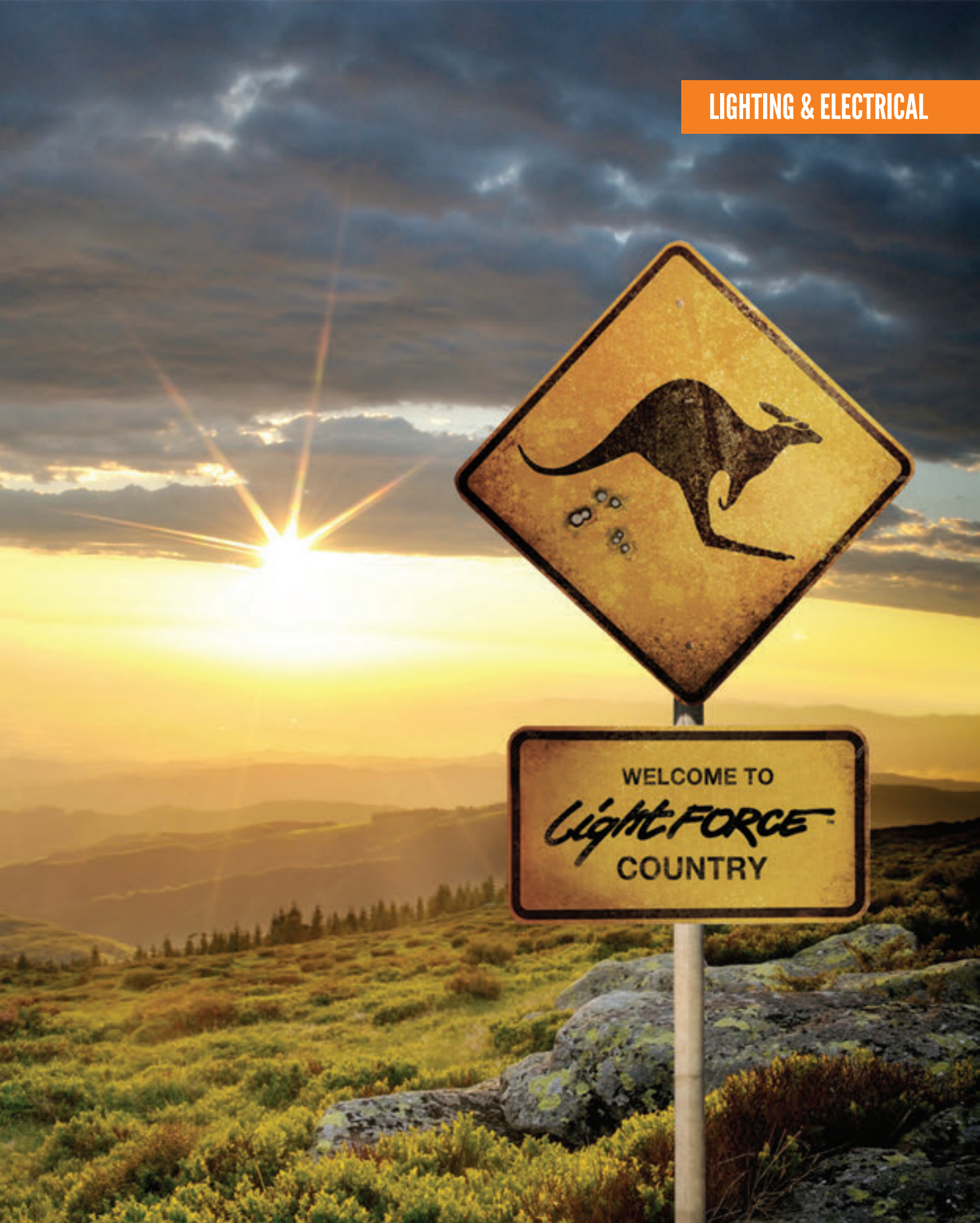
Being a man of vision and foresight, Ray recognised the potential demand for the lightweight, portable and hand-held spotlight which lay before him. It was a system powerful enough to use for professional purposes yet priced within the grasp of the enthusiast and sportsman.

Enter Lightforce; Ray soon produced his first commercially manufactured lighting system. Based on original designs, his lighting systems found such favour among professionals and sporting enthusiasts alike that production was increased and new improvements were incorporated. This brought greater diversity to the range, ensuring the growing success and popularity of the brand.

Lightforce is now based in Adelaide, South Australia and employs over 70 trained staff. Our fabrication plant has grown into a sophisticated manufacturing facility and Lightforce has a formidable reputation as a global leader in innovative design and excellence in the manufacture of high performance and durable lighting systems. Ongoing development has opened up new markets and our award winning range of modular accessories has helped increase demand to the point where we now export to over 50 countries worldwide.

With more than 25 years experience, Lightforce is now a global leader in portable professional lighting systems as well as driving lights, rifle-scope optics and lighting accessories.

Unlike our competitors, we are undertaking pioneering work in the use of modern composite and eco-friendly materials. This not only gives us a clear competitive advantage, but has also earned us a number of prestigious Australian and international design awards. We continue to see growth in customer loyalty and confidence right around the world.





CLASSIC SERIES



The original classic series features a selection of reflectors to meet the needs of all.

No matter what vehicle you own or what driving conditions you face, Lightforce has the solution. The original classic series features a selection of reflectors to meet the needs of all. Constructed of hi- tech polycarbonate, tested in the harshest of environments and backed by a three year warranty, this is a range that you can truly rely on.

The compact 140 Lance is great for situations in which space is an issue, while the mid-sized 170 Striker is our most popular worldwide. Finally, the large scale, long distance 240mm Blitz has been designed to pack a punch and leave others in the dark! All lights in the classic series are available in both halogen and HID for flexibility of choice.

140 LANCE



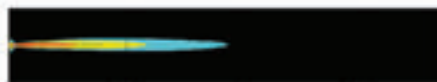
Max. Intensity: 120 900 Cd (Single Unit Halogen) / 315 700 Cd (Single Unit 35W HID)

Effective Range: 492m @ 1 LUX (Pair Halogen) / 795m @ 1 LUX (Pair 35W HID)

Weight: 460 grams

Standard Bulb: 12V 75W Xenophot 4000 Hour Bulb / 35W HID 2500 Hour Bulb (5000K)

PHOTOMETRIC RESULTS



795m @ 1 LUX (Pair 35W HID)

170 STRIKER



Max. Intensity: 382 600 Cd (Single Unit Halogen) / 456 000 Cd (Single Unit 35W HID) / 920 500 Cd (Single Unit 50W HID)

Effective Range: 875m @ 1 LUX (Pair Halogen) / 955m @ 1 LUX (Pair 35W HID) / 1357m @ 1 LUX (Pair 50W HID)

Weight: 560 grams

Standard Bulb: 12V 100W Xenophot 2000 Hour Bulb / 35W HID 2500 Hour Bulb (5000K) / 50W HID 2500 Hour Bulb (5000K)

(24V Halogen / HID Versions Available)

PHOTOMETRIC RESULTS



1357m @ 1 LUX (Pair 50W HID)

240 BLITZ



Max. Intensity: 493 900 Cd (Single Unit Halogen) / 725 240 Cd (Single Unit 35W HID) / 1 464 000 Cd (Single Unit 50W HID)

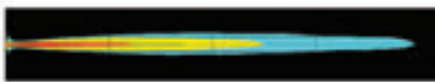
Effective Range: 994m @ 1 LUX (Pair Halogen) / 1204m @ 1 LUX (Pair 35W HID) / 1711m @ 1 LUX (Pair 50W HID)

Weight: 880 grams

Standard Bulb: 12V 100W Xenophot 2000 Hour Bulb / 35W HID 2500 Hour Bulb (5000K) / 50W HID 2500 Hour Bulb (5000K)

(24V Halogen / HID Versions Available)

PHOTOMETRIC RESULTS



1711m @ 1 LUX (Pair 50W HID)

PROFESSIONAL SERIES



LIGHTING & ELECTRICAL

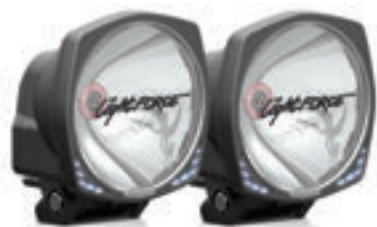
The professional series incorporates many of the features from the classic series, while adding a whole lot more!

The next step up in the Lightforce range, the professional series incorporates many of the features from the classic series, including the hi-tech polycarbonate construction and three year warranty while adding a whole lot more! With internal ballasts to prevent against moisture and contaminant ingress, and with added security, the professional series has got it all.

Featuring the new 170mm Venom – with its unique LED edges for added safety, the popular 210mm Genesis with its versatile four point mounting system and the award winning 240mm XGT, you will be able to find a quality light to suit your needs in the Lightforce professional series



170 VENOM



Max. Intensity: 592 064 Cd (Single Unit 35W HID) / 925 100 Cd (Single Unit 50W HID)

Effective Range: 1088m @ 1 LUX (Pair 35W HID) / 1360m @ 1 LUX (Pair 50W HID)

Weight: 900 grams

Standard Bulb: 35W HID 2500 Hour Bulb (4200K) / 50W HID 2500 Hour Bulb (4200K)

(24V Halogen / HID Versions Available)

PHOTOMETRIC RESULTS



1360m @ 1 LUX (Pair 50W HID)

210 GENESIS



Max. Intensity: 482 300 Cd (Single Unit Halogen) / 835 300 Cd (Single Unit 35W HID) / 1 205 000 Cd (Single Unit 50W HID)

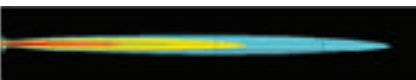
Effective Range: 982m @ 1 LUX (Pair Halogen) / 1293m @ 1 LUX (Pair 35W HID) / 1552m @ 1 LUX (Pair 50W HID)

Weight: 1.1kg

Standard Bulb: 12V 100W Xenophot 2000 Hour Bulb / 35W HID 2500 Hour Bulb (5000K) / 50W HID 2500 Hour Bulb (5000K)

(24V Halogen / HID Versions Available)

PHOTOMETRIC RESULTS



1552m @ 1 LUX (Pair 50W HID)

240 XGT



Max. Intensity: 510 300 Cd (Single Unit Halogen) / 936 000 Cd (Single Unit 35W HID) / 1 623 000 Cd (Single Unit 50W HID)

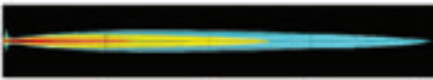
Effective Range: 1000m @ 1 LUX (Pair Halogen) / 1310 @ 1 LUX (Pair 35W HID) / 1802m @ 1 LUX (Pair 50W HID)

Weight: 1.37kg

Standard Bulb: 12V 100W Xenophot 2000 Hour Bulb / 35W HID 2500 Hour Bulb (4200K) / 50W HID 2500 Hour Bulb (4200K)

(24V Halogen / HID Versions Available)

PHOTOMETRIC RESULTS



1802m @ 1 LUX (Pair 50W HID)



LED SERIES



The LED series has been engineered to the high standard that users have come to expect from Lightforce products.

Using the latest technology, the Lightforce LED range has been engineered to the high standard that users have come to expect from Lightforce products, including the industry leading three year warranty.

This continually expanding range now includes a 180mm driving light, available in both spot and combination beams with tough pressure cast aluminium construction, two pack DuPont® automotive coating, rugged impact resistant hard coated polycarbonate lens for durability and a water proof rating to IP68 standard. In addition to this, a 215mm LED light which is designed specifically for larger vehicles and truck drivers. Built to the same tough standard as the 180, the 215 is also available in both the spot and combination beam patterns.

Rounding off the LED range is the compact yet powerful 2 inch ROK40 work light, perfect for a range of applications including heavy equipment usage, mining, marine, off road vehicles and ATV to name a few. Each light within this range features an impressive 50,000+ hour LED life span to ensure that Lightforce LED will never let you down.

ROK 40



TECHNICAL SPECIFICATIONS

- Power: 40W (4 x 10w Cree chipsets)
- Raw Lumens: 3200
- Weight Including Bracket: 716 grams

PHOTOMETRIC RESULTS



200m @ 1 LUX (Single ROK 40)

180 LED



TECHNICAL SPECIFICATIONS

- Power: 70W (7 x 10W Cree chipsets)
- Raw Lumens: 5180
- Weight Including Bracket: 2.1kg

PHOTOMETRIC RESULTS



473m @ 1 LUX (Pair 180 LED)

MODULAR FILTER SYSTEM



LIGHTING & ELECTRICAL

Made of polycarbonate, our filters are able to withstand impacts that literally can leave our opposition in pieces!

Made of polycarbonate, our filters are able to withstand impacts that literally can leave our opposition in pieces! Polycarbonate is used in fighter aircraft canopies, security screens etc. Our system even includes infra-red as supplied to the military and law enforcement agencies for covert operations with night vision gear. It's a tough world out there and Lightforce is sought after for its unique performance where the majority fail.

SPOT
140 | 170 | 210 | 240



CLEAR
Supplied as standard



YELLOW
Fog | Silt | Haze | Dust



CRYSTAL BLUE
Increased clarity



SNOW BLUE
Snow | Rain | Sea Spray



AMBER
Offroad | Silt | Haze | Dust



BLACK
Protective

COMBO
170 | 210 | 240



CLEAR
Supplied as standard



YELLOW
Fog | Silt | Haze | Dust



CRYSTAL BLUE
Increased clarity



SNOW BLUE
Snow | Rain | Sea Spray



AMBER
Offroad | Silt | Haze | Dust

WIDE
140 | 170 | 210



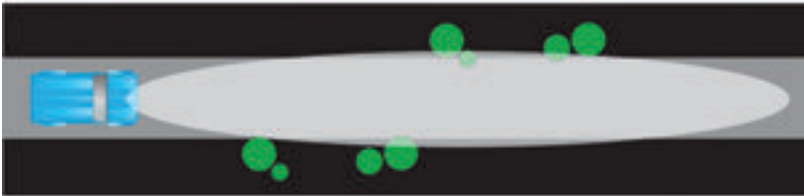
CLEAR
Supplied as standard



YELLOW
Fog | Silt | Haze | Dust

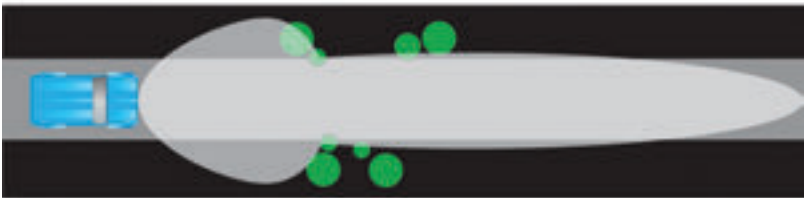


CRYSTAL BLUE
Increased clarity



SPOT

Every light is supplied with a CLEAR SPOT filter. This allows maximum distance and via various colours allows you to quickly change to suit any driving conditions.



COMBO

The COMBO gives a wide beam pattern plus the bonus of long distance all in one. This is fast becoming the most popular Lightforce accessory worldwide!



WIDE

The WIDE angle maximises the beam spread giving broad peripheral vision. This enables you to see potential hazards and enhances your driving safety and performance.

VENOM!

NEW FROM *LightFORCE*TM
PERFORMANCE LIGHTING



OUTBACK TOUGH, CITY STYLE

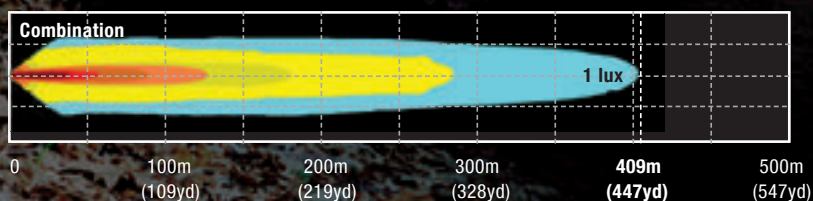
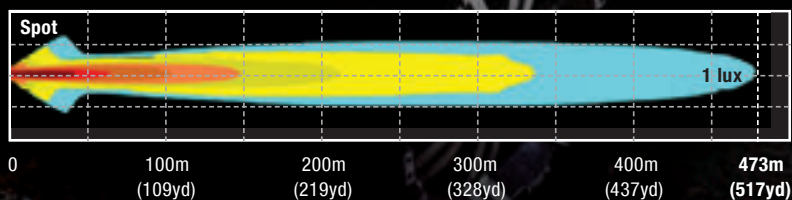
Durable high performance meets the latest in technology and style.
The new Venom driving light is proudly Australian designed and made.

lightforce.com



LightFORCE
PERFORMANCE LIGHTING

LIGHTFORCE LED HAS ARRIVED



National Association of Testing Authorities Accredited, Australia 2014. Photometric testing performed by Photometric Solutions International Pty Ltd (PSI) Huntingdale VIC • April 2014



lightforce.com  

Lightforce Custom Built offers a custom design and fabrication service, specialising in lighting solutions for customers with unique requirements. Feel free to contact us to discuss your individual needs.

AUSTRALIAN SPOTLIGHT PROTECTION

Sick of 'yellowing' spotlight covers?
Australian Spotlight Protection can help.

From the Bush to the Beach to the Arctic, we have tested our covers everywhere.

All of our products are made from 100% UV resistant Acrylic. The UV resistant material prevents discolouration and keeps your covers looking crystal clear.

To give you piece of mind all of our clear covers come with a 15 year warranty against 'yellowing'!

Australian Spotlight Protection offers a range of clear and coloured covers for both spotlights and driving lights.

We are also a proud OEM supplier to Ford, Holden, Jeep, Mitsubishi Motors, Nissan, Toyota and Kenworth.

Available at your nearest **OL opposite lock**
4WD & Vehicle Accessories



OUR PRODUCTS ARE PROUDLY AUSTRALIAN OWNED
AND MADE. FAMILY RUN BUSINESS SINCE 1992.

LIKE US ON FACEBOOK

SPOTLIGHTPROTECTION.COM.AU



OPPOSITE LOCK HIGH PERFORMANCE LED LIGHTING

LIGHTING & ELECTRICAL

Opposite Lock offers a rock solid range of high performance LED Driving Lights, Light Bars and Work Lamps.

When it comes to 4x4 vehicle lighting, Opposite Lock has teamed up with quality, trusted manufacturers to deliver an LED range to suit all offroading needs.

Built tough to withstand most impacts and terrain, using the latest advanced drivers and circuitry, including ETM (Electronic Thermal Management) prevents the LED's from overheating and failing under the most extreme conditions.

Light up your offroad adventure, speak to Opposite Lock about equipping your vehicle for the night!



DRIVING LIGHTS



The NITRO 180mm L.E.D Driving Lights are the latest addition to the Power Vision driving light range. Utilizing a robust high pressure die-cast aluminium housing, high impact polycarbonate lens and superior optics, the NITRO is in a class of its own.

All Nitro lamps come complete with easy adjust mounting bracket, clear lens covers and waterproof plug connectors for complete peace of mind.

LIGHT BARS



The L.E.D Light Bars are the latest addition to the Opposite Lock huge lighting range. Utilizing a robust extruded aluminium housings, high impact polycarbonate lens and superior optics, the Dura Vision Light Bars are in a class of their own. The Dura Vision Light bars are available with 2 different wattage L.E.D - the Xcel utilizes a 5W L.E.D and the Tornado features a 10W L.E.D. All bars come standard with waterproof connectors for complete peace of mind.

WORK LAMPS



Dura Vision L.E.D Work lamps have proved their high performance and rugged construction in some of Australia's harshest conditions. A full range of Dura Vision L.E.D work lamps are available from you local Opposite Lock store.

From entry level, low powered lamps up to high powered extreme lamps for the recreational enthusiast we have got you covered.

POWER VISION®

NITRO DRIVING LIGHTS

The NITRO 180mm L.E.D Driving Lights are the latest addition to the Power Vision driving light range. Utilizing a robust high pressure die-cast aluminium housing, high impact polycarbonate lens and superior optics, the NITRO is in a class of its own. All Nitro lamps come complete with easy adjust mounting bracket, clear lens covers and waterproof plug connectors for complete peace of mind.

NITRO DRIVING LIGHTS

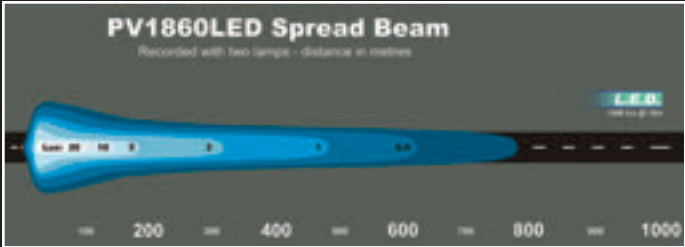
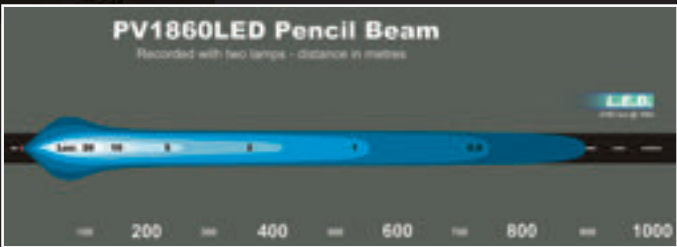
NITRO 60W

The 60W Nitro lamp features 12 x 5w Cree LED's producing over 5400 raw lumens per lamp. Available with long range pencil beam optics and wide angle spread beam optics the Nitro 60W lamps produce a high power focused beam for excellent illumination.



SPECIFICATIONS	60 Watt
Light Output - Raw	5440 Lumens/lamp
Light Output - Effective	3800 Lumens/lamp
Voltage	9V-60V
Waterproof Rating	IP68
Diameter	180mm
Warranty	3 Years

PART NUMBERS	
Pencil Beam	PV1860LEDP
Spread Beam	PV1860LEDS



NITRO 80W

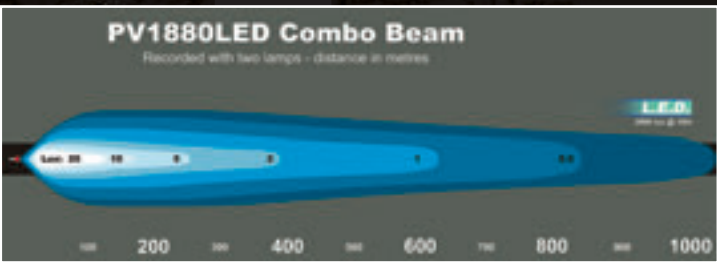
The 80W Nitro LED is built in Australia, utilizing the latest 10 Watt Cree USA high output LED's. Manufactured with the latest advanced drivers & circuitry, including ETM (Electronic Thermal Management) therefore preventing the LED's from overheating and failing under extreme driving conditions.

The REFLEX optics enhance the lighting output providing you with an exceptional high powered long range beam with the added features of super wide spread, giving you an exhilarating driving experience.



SPECIFICATIONS	80 Watt
Light Output - Raw	8230 Lumens/lamp
Light Output - Effective	6400 Lumens/lamp
Voltage	9V-36V
Waterproof Rating	IP68
Diameter	180mm
Warranty	5 Years

PART NUMBERS	
Black Housing	PV1880LEDB
Chrome Housing	PV1880LEDC
Black Housing Chrome Rim	PV1880LEDR



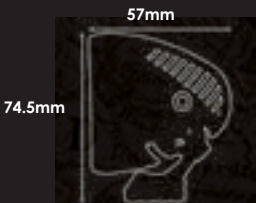
The L.E.D Light Bars are the latest addition to the Opposite Lock huge lighting range. Utilizing a robust extruded aluminium housings, high impact polycarbonate lens and superior optics, the Dura Vision Light Bars are in a class of their own. The Dura Vision Light bars are available with 2 different wattage L.E.D - the Xcel utilizes a 5W L.E.D and the Tornado features a 10W L.E.D. All bars come standard with waterproof connectors for complete peace of mind.

XCEL RANGE



- 5W USA Cree L.E.D's
- Lumens per L.E.D: 450 Lumens
- Available in 4 Lengths
- Extruded Aluminium Housing
- Polycarbonate Lens
- Euro Beam
- Compact Design
- Multi-Volt 10V-30V
- Waterproof Rating: IP67
- Length: 276mm - 990mm
- Waterproof Connectors
- 2 Year Warranty

No. of L.E.D's	LUMEN OUTPUT	LENGTH	PART NUMBERS
6 L.E.D's	2'700 Lumens	276mm	DVL06LED
12 L.E.D's	5'400 Lumens	516mm	DVL12LED
18 L.E.D's	8'100 Lumens	750mm	DVL18LED
24 L.E.D's	10'800 Lumens	990mm	DVL24LED

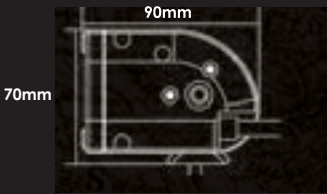


TORNADO RANGE



- 10W USA Cree L.E.D's
- Lumens per L.E.D: 950 Lumens
- Available in 5 Lengths
- Extruded Aluminium Housing
- Polycarbonate Lens
- Combo Optics
- Compact Design
- Multi-Volt 9V-48V
- Waterproof Rating: IP68
- Length: 277mm - 1074mm
- Waterproof Connectors
- 3 Year Warranty

No. of L.E.D's	LUMEN OUTPUT	LENGTH	PART NUMBERS
6 L.E.D's	5700 Lumens	277mm	DVS106LEDC
10 L.E.D's	9500 Lumens	436mm	DVS110LEDC
12 L.E.D's	11'400 Lumens	516mm	DVS112LEDC
18 L.E.D's	17'100 Lumens	755mm	DVS118LEDC
26 L.E.D's	24'700 Lumens	1074mm	DVS126LEDC





DIRTY weekends



SmartDrive™

Power to save fuel & cut emissions*

Enjoy a dirty weekend with Century's Ultra Hi Performance 4WD battery, designed to deliver longer life and reliable performance for Australia's harsh off-road conditions. Featuring revolutionary **SmartDrive™** technology this range of environmentally friendly batteries can help reduce fuel consumption and vehicle emissions[^] for the latest generation of motor vehicles.

Century

Batteries that last and last

www.centurybatteries.com.au

[^]In vehicles fitted with Regulated Charge Control Systems.

For more information contact your local Opposite Lock



Whether venturing into the outback, enjoying the hinterlands or sampling the Top End, it is important to have the right equipment and that includes the battery. Century 4WD batteries are designed and built tough to withstand the challenges of Australia's extreme off-road conditions.



Ultra Hi Performance Range

The ultimate in 4WD battery performance and technology. Designed and manufactured right here in Australia to suit our extreme climate and harsh off road conditions. Featuring extra thick battery plates, specialist alloys and denser active material, to provide superior starting power and longer battery life. Puncture resistant separators and Century's exclusive Platelock™ adhesives deliver superior vibration resistance and withstand damage from repeated impact on rough tracks.

ITEM ID	BATTERY	CCA (-18°C)	RC (25mins)
122103	N70ZZ4WD	760	185
122101	N70ZZL4WD	760	185



Hi Performance Range

Designed and built tough here in Australia to provide dependable performance and reliability in the latest 4WD vehicles. Derived from over 85 years of manufacturing expertise, they are ideal for use in urban or extreme off-road environments and feature the revolutionary SmartDrive™ technology to reduce CO2 emissions and fuel consumption^.

ITEM ID	BATTERY	CCA (-18°C)	RC (25mins)
121100	N70ZZ	720	160
121103	N70ZZL	720	160



Dual Battery Systems

In vehicles fitted with multiple accessories such as fridges and winches, a dual battery system utilising a secondary Deep Cycle battery is recommended. Century Deep Cycle Flooded batteries are constructed using thicker plates, specialist lead alloys and denser active material to withstand cycling. Platelock™ adhesives bind the battery plates securely together to deliver superior vibration resistance whilst the low maintenance design enables easy access to top up electrolyte levels, for maximum control over battery life.

ITEM ID	BATTERY	Ah (20h R)
141121	N70T	100



CB123-1507

A GREAT DAY BEGINS WITH A GREAT START...

A flat battery will not only ruin your day, it could potentially leave you stranded.

Sure it's great to have that second battery for running your fridge, keeping the beer frosty and the snags from going off is a must, but if it comes at the cost of a disabled vehicle, you could be wishing you had a larger supply of both...

The interVOLT EBI Pro takes full advantage of the high current from your vehicle's alternator to maintain your auxiliary battery without risk of discharging your main battery – period!



*The revolution in dual
battery controllers*

Please visit us at www.intervolt.com
or scan the QR code for more
information about the EBI PRO.

Features

- Charge your auxiliary battery when your vehicle is running
- Protect your starting battery from inadvertent discharge
- Program the switching voltages to suit your application
- Take advantage of your vehicle's full charging potential
- Divert excess solar power to charge your starting battery
- Use your auxiliary battery for emergency starting back-up
- Solid state electronics – no moving parts to wear or fail
- Rest easy knowing you have an EBI Pro under the hood!

Available
through
authorised
retailers
Australia wide.



interVOLT

BATTERY ISOLATORS

In many vehicles, particularly 4WD or RV applications, there is a requirement to automatically charge a second (or auxiliary) battery from the starting (or main) battery. This is a well proven concept and is usually only limited by the constraints of the device used in the installation. These constraints have now been overcome by the introduction of the EBI Pro.

The EBI Pro is a revolution in dual battery control devices. Unlike conventional electro-mechanical isolators the EBI Pro is solid state. Solid state means no moving parts. There are no contacts to vibrate, chatter, arc, wear and ultimately – fail. The MOSFET based topology of the EBI Pro is proven. Reliability, durability and longevity are built in. The solid state aspect is just the beginning.

Designed on the back of the ground-breaking PSR, the EBI Pro is also adjustable in terms of voltage and time delay. This provides the installer or operator with the means to customise the EBI Pro for the application rather than the ‘one size fits all’ philosophy from manufacturers of traditional devices. This is a feature previously unavailable in conventional dual battery isolators/combiners and sets interVOLT apart from the competition.



LIGHTING & ELECTRICAL

DUAL BATTERY BOX



For those vehicles in need of a fully-functioning Dual Battery System, but which are not blessed with sufficient under-bonnet space Opposite Lock can offer the Serious Dual Battery Box.

This unit provides all the battery facility you need to run fridges and lights, in a semi-portable package that can travel in the vehicle luggage space, where it plugs into the vehicle charging system.

The completely self-contained design of the battery box, with smart isolator, LED battery charge indicator and protected outlet sockets, means that it can be stored out of the vehicle when not required. It also provides camp-site convenience when lifted out of the vehicle to become the “power station” for accessories.

SPLIT CHARGE ISOLATOR



Simple Parallel-Charge systems can be installed for an appropriately economical price, in earlier vehicles, using “Smart” isolators, sometimes described as Split Charge isolators. Parallel Charging systems can gain more “intelligence” using the very latest MOSFET solid state switching, to protect vehicles with more electronic complexity and provide customising options in the way of operating voltages and time delays. These allow compatibility with the latest variable output alternators in current vehicles.

For further operating options, tolerance to remote battery locations and compatibility with the very latest vehicles’ charging systems, we can also offer DC/DC charging through the very latest devices coming to the market.

MANUAL SWITCHING ISOLATORS



These can be simple On/Off switches, or the Marine Type rotary isolators. The marine or 4-position switches offer a full range of switching options - battery 1 on, battery 2 on, both batteries on or both batteries off.

The upside is the comprehensive range of switching options. The downside is the need for the operator to remember to operate the switch at the appropriate times, and understand the consequences of remembering or forgetting.

To achieve switching inside the vehicle cabin requires running of starter sized cables through the firewall from the engine bay. For safety and function we recommend this installation is done at your local Opposite Lock store.

MAPS & NAVIGATION



Hema Maps is a Brisbane-based mapping and publishing company that was founded in 1983. The company has expanded purposefully to the point where today it has comprehensive Australia and overseas map coverage in a variety of forms including folded maps, atlases, guides and digital products such as apps and dedicated GPS navigation systems.

With a keen focus on off-road touring, Hema Maps has steadily built its reputation as masterful map makers in the four-wheel driving and outdoor adventure industries. This reputation has come to the fore thanks to the company's relentless pursuit of accurate cartographic detail relevant to outdoor explorers, realised by its unparalleled updating process.

The job of collecting and updating this data falls to field-teams known as the Map Patrol, who are responsible for exploring and mapping the vast array of off-road destinations in Australia to keep Hema Maps' data accurate and up-to-date. Since 1996, Hema Maps has GPS mapped over 250,000km of roads and tracks throughout Australia, and will continue to pursue premium quality and accuracy within its product range into the foreseeable future.



HN7 GPS NAVIGATOR



The Hema Navigator HN7 packages Australia's most trusted touring and off-road navigation inside a 7-inch finger-touch screen. Explore Australia with street and 4WD navigation, over 6000 camping and touring points of interest (POI) and brand new campsite photos that maximise the HN7's large high-resolution display.

- High resolution 7-inch display (800x480px)
- Finger-touch screen means no stylus required
- New finger friendly EziOzi user-interface for simple 4WD navigation
- Over 6000 fully detailed Camps & Caravan Parks Australia Wide POI

HEMA EXPLORER APP



Hema Explorer combines reliable Hema maps for navigation with innovative content and features for planning ahead.

Hema Explorer has offline Hema base maps (1:1Million Touring and 1:250k Topo) and online access to satellite, street and terrain mapping which you can clip and save to use out in the bush. 40,000 interactive points of interest (POI) with facilities, activities and contact details attached are pinpointed on the mapping, informing trip-planning and real-time navigation decisions. Meanwhile, online access to the Hema Explorer Cloud, Hema's public track database, in addition to in-app weather and rain data will ensure you have all your bases covered when your next adventure rolls around.

ROAD & 4WD ATLAS



The Australia Road & 4WD Atlas has Australia-wide atlas mapping and a bonus 4WD mapping section, with facilities marked on the map for informed trip-planning and navigation.

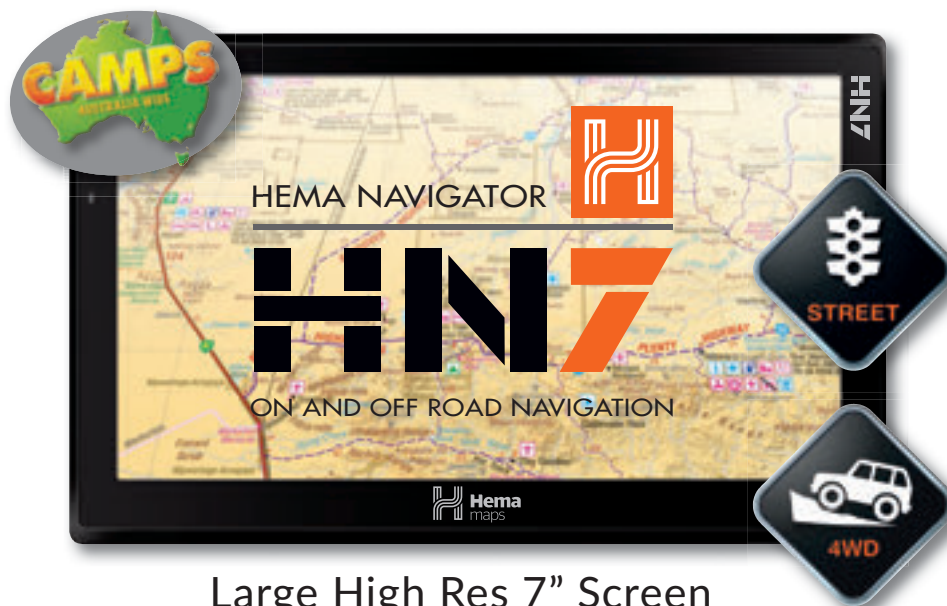
- Camping and rest areas
- Overnight camping and caravan parks
- 24-hour fuel
- Town maps
- 4WD section includes Cape York, Fraser Island, High Country Victoria, the Flinders Ranges, Central Australia, the Top End, the Kimberley and the Pilbara

Prepared to explore.

Since 1996 Hema has GPS mapped over 300,000km

Hema Maps has been exploring Australia for over 30 years to craft the most accurate and detailed mapping possible for out-of-the-way areas. By actually driving tracks in order to gather the data and information seen on every Hema map, this company of explorers' range of GPS navigators, mobile apps and printed products are the most reliable and intuitive navigation tools for four-wheel driving, camping and touring throughout Australia.

Hema Navigator HN7 ON AND OFF ROAD NAVIGATION



Large High Res 7" Screen

Preloaded with:

STREET NAV

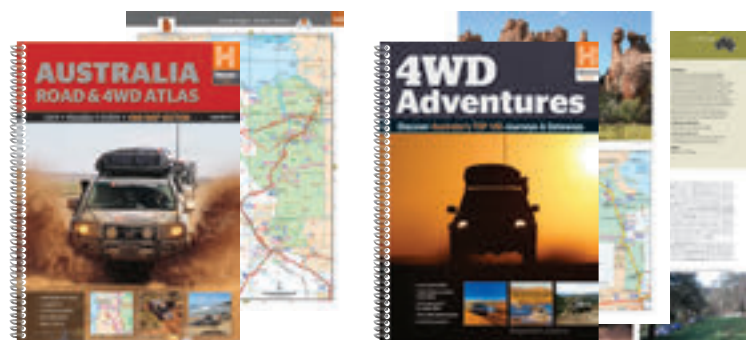
- iGO Primo Street Nav with big button display
- 6000+ Camps & Caravan Parks Australia Wide points of interest (POI)
- POI include free and low cost sites with 2300 Camps Snaps site images, facilities and site information

4WD NAV

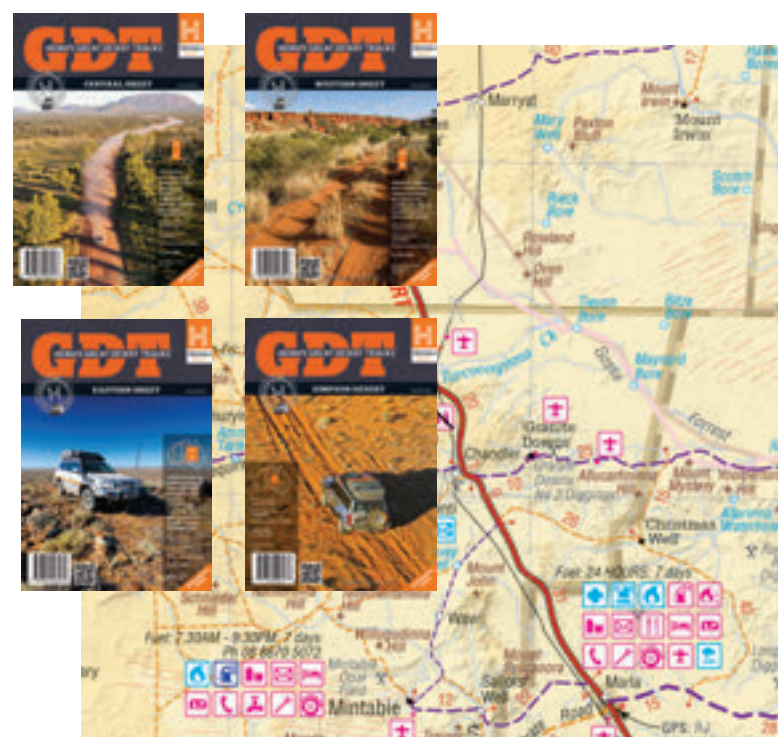
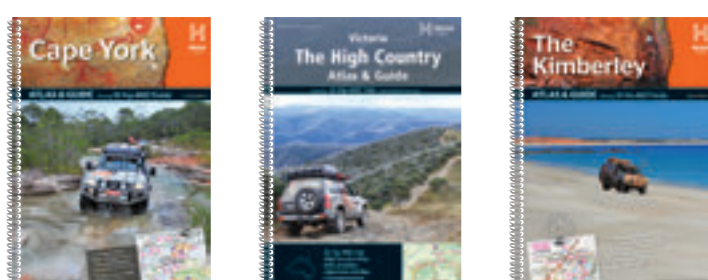
- Updated EziOzi 4WD Nav with large, finger friendly buttons
- Hema seamless 1:1Million and 1:250k Australia Touring maps
- Hema 4WD & Topo maps
- Hema Navigator Explorer Windows™ PC software



of Australia's most remote roads and tracks.



hemamaps.com



shoot/share™

  @IONCAMERA
#IONCAMERA

Using ION's SHOOT/SHARE technology you can shoot every experience and share as you live it via Facebook, You Tube, iON CLOUD or e-mail.



Dashboard

-Check your Wi-Fi connection, file upload status and check your battery life.



-Check the file details including date, size, resolution and file type.



Album

-Sort and filter the photos and videos within the albums.



Remote

-Use your iOS device as a viewfinder to preview, as a live camera and to record.



Settings

-Control the camera functions and settings remotely.

www.ioncamera.com

ION ACTION CAMERAS



LIGHTING & ELECTRICAL

Get out of the box with iON Cameras.

Rightly, customers want more bang for buck and something that is easy to use yet delivers the ultimate footage of daring escapades.

Enter iON Cameras, the company that brought Shoot/Share™ Wi-Fi connectivity to point-of-view (POV) cameras.

They are designed to be the best in terms of quality yet they are super EASY to use. They are also focused on multi use options - so the product can be used as an in-car safety camera and evolve into a POV video to use in a wild river crossing mounted on the bonnet (or person).

The range includes SpeedPro, AirPro2 and Adventure (in-built GPS) are able to be used, set and downloaded via WiFi from your smartphone or device. Waterproof out of the box (without housing) means no fogging and lost footage with 'real' audio. Vibrate on/off and burst or time-lapse still image options make iON the clear market leader in simple and effective POV technology.



SPEEDPRO



Aimed at motor enthusiasts, adrenalin junkie and recreational sports enthusiasts alike, this product offers users amazing advantages:

- One of the lightest Wi-Fi enabled (Wi-Fi PODZ™ sold separately) HD Action camera weighing just 130 grams.
- Waterproof to 30ft (10 metres), complete with waterproof microphone to enable high quality audio while offering protection from the elements.
- Wide angle lens - provides ability to record in HD with a field view of up to 170 degrees.
- HD recording - Up to 1080p at 30fps/720p at 60fps or 30fps.

AIRPRO



Aimed at professional and amateur photographers, adventurers, adrenalin junkies and recreational sports enthusiasts alike, this product has a lot to offer:

- One of the lightest Wi-Fi HD Action camera weighing just 142 grams.
- Custom anti-fog lens
- HD recording - Up to 1080p/60fps video resolution..
- 12 megapixel stills - Single Shot (one shot), Burst Mode (three in one second), Time Lapse (a photo every 10,20 or 30 seconds).

ADVENTURE



Packed full of features for every kind of sports addict, traveller or motorist. This product has features for both in car and action video use.

- Built-in GPS receiver to add location, speed and altitude data to videos.
- Loop recording mode allows continuous non-stop recording with dual memory card slot.
- Simple to use one touch function allows simultaneous camera start and record all with one finger.
- 3 hours battery life.
- Ultra wide angle lens.
- HD recording - Up to 1080p video resolution.

Electronic Rust Prevention System



- Prevents Rust
- Maintains the resale value of your vehicle
- Saves on maintenance costs
- Protects not only the outside of vehicles but also all the inner and hidden areas that sprays can't reach
- Prevents stone chips from developing into protrusion rust
- Enhances paintwork
- Unmatched record of 18 years of Australian manufacturing



For more information, speak to your local
Opposite Lock representative

www.erps.com.au

ELECTRONIC RUST PROTECTION



ERPS has been designing, developing and producing its electronic rust prevention systems from their Gold Coast, Australia facility since 1996. Since then more than 30 other brands of electronic rust prevention have come and gone. ERPS remains and their base of satisfied customers in Australia and around the world continues to grow.

When choosing an electronic rust prevention system for your vehicle you must consider a number of variants, namely the type and size of vehicle (car, 4WD, bus, earth moving machinery etc), the age of the vehicle and the environment to which the vehicle will regularly be exposed.

The larger the vehicle, the older the vehicle or the harsher the conditions, the stronger the protection required and therefore the larger electronic rust prevention system required.

ERPS manufacture four standard size systems:

- Single coupler system - “monolithic”
- Four coupler system
- Six coupler system
- Ten coupler system
- Custom made systems are also available for all applications.



SAFETY FIRST

Current specifications for sand dune driving (for the Simpson Desert but recommended everywhere else!) require a 300mm wide x 290 mm high 'hi-vis' flag with the top of the flag being a minimum of 3.5 metres from the ground at the front of the vehicle. If it's attached to the roof rack it must be two metres higher than the roof. Which is why Opposite Lock has a square fluorescent orange flag criss-crossed with highly reflective strips and a full complement of mounting kits to suit their bright orange safety flag pole!

Knowing that this kit needs to be kept in good condition for the usually huge track mileages required to get to desert country there's also a storage bag on offer to protect what is without a doubt a critical bit of safety kit for the serious Aussie bush traveller.

Yep, we've come a long way since the days when I used to hoist a bright purple chip packet on to a long stick and tape it to Milo's rack! But then the volume of traffic and the higher speeds people need to crest dunes means doing the right thing isn't just a legal requirement, it's essential for a safe crossing.

Tyre failure is common in the outback which is why you should be carrying two spares and some tyre plugs or spare tubes. You can save a lot of drama with a Tyreguard tyre pressure monitoring system by getting some early warning on a sudden drop. These units are especially helpful for people who enjoy a lot of low pressure beach work because they also monitor the heat build up using low pressures over long periods can sustain.

Talking sustenance, carrying a good first aid kit is essential whether it's a trip up the beach or across the country. This is another area where

Opposite Lock's forty plus years of experience comes to the fore - the OL first aid kit contains Aussie type essentials like burn dressings and gel, instant ice packs, sunscreen and much more. My best bet here is to take a first aid course too. I did one about thirty years ago as part of a mine operating licence but, as my Handbrake was only too keen to inform me, most of that old information is as out of date as a pair of tight cut stubbies. No more cutting snake bites and sucking out the venom, the proven way now is to use pressure bandages to slow down the circulation without cutting it off! Yep, get yourself to a one day first aid course and learn how to save a life!

The biggest life saver might be the one you never need to use though. If you're planning some serious overlanding without other vehicles to back you up, not much beats a PLB or Personal Locating Beacon. Opposite Lock stocks the GME units which are totally reliable but if you're budget doesn't stretch that far I'd recommend the SPOT Satellite GPS Messenger unit.

I know it works, I set one off during testing by accident on the west coast of Tasmania. Twenty minutes later a helicopter flew over the ridge and zeroed in on our beacon. Hmmm, won't be doing that again, unless we have to!

Rusty



SAFETY FLAGS



The 4x4 Equip Safety Flag meets Occupational Health & Safety Standards for mining and industrial vehicles and is an ideal replacement flag for the 4x4 Equip Safety Flag Pole.

It also suits most other brand Safety Flag Poles.

Manufactured from heavy duty mesh it features a tubular sleeve for placing over the flag pole, and three eyelets for securing. The safety orange colour attracts attention while the reflective strips ensure increased visibility from every angle. Cable ties are included.

FIRST AID KITS



If you're venturing out into the bush, down the beach, or even heading off in your boat, it pays to be prepared for almost any eventuality.

If you are into adventure or have working personnel in the bush this kit will suit you. Packed with valuable extras from Burn-aid dressing and gel, Instant ice pack, Sunscreen, Crepe/ Compression bandages, to Resuscitation face mask and Thermometer. Smart looking, large soft pack with carry handles and waist strap.

PERSONAL LOCATOR BEACON (PLB)



GME's Accusat MT410G Pocket Pro+ with integrated GPS Personal Locator Beacon (PLB) has been leading the world's PLB market due to its features, and innovation.

The MT410G Accusat PLB offers a 7 year battery replacement life, and a 7 year warranty, the unit also features a high intensity flashing LED, a 'Non Hazmat' battery pack for simple and cost effective transportation and a 50 search channel GPS receiver with top mounted Quad helix antenna to improve location accuracy to better than 100 metres typically.

Monitor your tyre pressure on the move!

... with *iTPMS 8886*

tyre pressure monitoring system for iPhone

Driving on a flat or rapidly-deflating tyre can severely damage your expensive tyre, your car ... or worse.

Even under-inflated tyres can place up to 10% strain on a vehicle's drive, and use 10% more fuel.

The Davies, Craig *iTPMS 8886* is a unique DIY electronic safety system which monitors tyre pressure and temperature, instantly warning of any problems.

Simple screw-on sensors monitor the pressure and temperature inside each tyre. This vital information is transmitted wirelessly to the in-car sensor plugged into your cigarette lighter and to the app on your iPhone or iPad.

With any marked variation in tyre pressure and/or temperature, an audible alarm sounds, the in-car sensor flashes red and the iPhone display tells you which tyre has the problem.

Now, that's safer driving!



iPhone/iPad and mount not included.



TYREGUARD⁴⁰⁰

Digital tyre pressure and temperature monitoring system

- ✓ *Increase driving safety*
- ✓ *Maximise tyre life*
- ✓ *Improve fuel economy*
- ✓ *Simple DIY installation*

The Tyreguard 400 from Davies, Craig is a wireless monitoring system that safeguards the air pressure and temperature of up to 22 tyres on your vehicle.

The lightweight (9g) tyre sensors fit neatly on to your tyres' valves (no wheel balancing required), and transmit the tyre pressure and temperature wirelessly to your in-car mounted digital control monitor. Booster sensors are available for vehicles longer than 8m.

The monitor sounds an alarm and a red LED flashes when the pressure rises or falls by more than 20 kPa (3 psi)... it even tells you which tyre is affected!





Safety Communications Via Satellite



rescueME PLB1

- Worlds Smallest PLB
- 406 mhz Satellite Link
- 66 Channel GPS
- 7 Year Battery Life
- Waterproof to 15m
- No Subscription



Spot Gen 3

- Send OK or Help Messages To Family and Friends
- SOS to Emergency Services
- Motion Activated Live Tracking
- Custom Messaging
- Online Subscription



Delorme inReach SE

- Two Way Communication
- SOS to Emergency Services
- Send and Receive SMS/Email
- Live Tracking - Colour Screen
- Pair to Smart Phone or Tablet
- Online Subscription



Thuraya SatSleeve

- Add a Satellite connection to your Smartphone
- Available for iPhone and Android
- Satellite Voice, Data and Apps
- HPA Capabilities
- Casual Plans Available





Travelling in a 4WD often takes us beyond the range of mobile phone networks yet we still have the need for communication, be it as a remote worker, holiday tourer or just out for the weekend. Satellite communication technology has become more affordable and accessible in recent years and there are a few groups of satellite devices available.

Distress Beacons, also known as a Personal Locator Beacon (PLB) or an Emergency Position-Indicating Radio Beacon (EPIRB), are transmitters which aid in the detection and location of vessels, vehicles, and people in distress. Coverage is worldwide via the Cospas-Sarsat international satellite system for Search and Rescue (SAR).

When activated, these beacons send out a distress signal and your GPS location. In Australia this is detected by Australian Maritime Safety Authority (AMSA) for both land and sea activations. AMSA then co-ordinate the rescue. The smallest PLB in the world is the **rescueME PLB**. It is only 116 grams, has a 66 channel GPS and a 7yr battery life. Being not much bigger than a matchbox, this makes it great for outback travelling and hiking.

Satellite Phones have become more affordable with a Thuraya SatSleeve to turn your iPhone 4/5 or Samsung S3/4/5 into a fully operational Satellite Phone, the Globalstar satellite phone at the more affordable end right through to the more robust satellite phones from Iridium. You can also get a normal Australian mobile phone number for your satellite phone and call rates from 99 cents a minute.

We can all stay connected and have peace of mind knowing that whilst we are travelling remotely, satellite communication is in our hands from a Help/Distress signal right through to a simple G'day to our families.

Personal Satellite Communicators (PSC) allow preconfigured or short messages to be transmitted to family and friends. These include the Spot Gen3 and Delorme inReach SE.

These devices require an ongoing subscription starting at about \$15 a month. They also have a live tracking mode and the inReach SE offers 2 way communication.

All the PSC devices also have a Distress (SOS) function that goes through to AMSA.



GME UHF RADIOS & HANDHELDS



If your adventure is taking you way off the grid, or if you're travelling with other offroaders, make sure to stay in touch with GME's wide range of UHF radios and handhelds.

The ability to share information is fundamental to mankind's evolution, therefore when one considers the isolation and geography of Australia, it is clear why radio communications have played such an important role in the development of the nation's infrastructure. Reliable radio access has been a vital component in such Australian icons as the Royal Flying Doctor Service and The School of the Air. It is also not surprising that innovative telecommunications should emerge as one of the country's leading industries.

For over 30 years the Australian rural community has enjoyed the benefits of GME's radio communications. In the 1980s our range of 477 MHz radios was instrumental in changing the face of farm communications, improving productivity and safety. Today GME telemetry and data radio equipment is introducing new levels of efficiency in farming, viticulture and many associated rural activities.



TX3100



A super compact addition to the GME 80 channel UHF CB range with innovative 'flip' feature make for easy installation and incorporating the latest Digital Signal Processing technology.

The GME TX3100 radio is Australian designed and built and is one of the most advanced UHF Citizen Band radio available. Combining the very latest in electronic hardware with the most up-to-date computer aided design and manufacturing techniques to produce an extremely compact mobile radio with outstanding specifications and performance. The TX3100, with its front mounted controls, is designed for unobtrusive mounting in modern vehicles. Its innovative features include a built-in loud speaker housed within an extremely compact case.

TX3120S



Synonymous with quality and reliability, the GME TX3120S is one of the most advanced 5 Watt UHF CB radios of its kind. Equipped with GME's newest digital scanning technology - ScanSuite - and an impressive feature list that includes Digital Signal Processing, Advanced Signal Management and Dynamic Volume Control. With CTCSS and DCS this radio ensures more privacy and less interruption.

This new super compact radio has separate rotary user controls for volume and channel change, the widest LCD screen available on any super compact sized UHF and a new dynamic speaker microphone. These new and unique features improve useability and audio quality for a better UHF experience.

Genuine GME 5 year warranty.

TX6150



This rugged Australian designed radio is built with a die-cast chassis and is rated IP67 water and dust proof. With a powerful 2200mAh lithium ion battery pack and intelligent battery management, the radio can operate for a minimum of 24 hours on low power or 15 hours on high power - 50% longer than any other 5 watt UHF CB radio.

This compact radio is equipped with a super sensitive receiver with input filtering and has an extensive list of innovative software features in scanning, memory, signal processing and privacy.

GME LAND ANTENNAS



GME offers a wide range of 27 MHz, 477 MHz, mobile phone and AM/FM antennas. Manufactured to exacting high standards to accessorise the GME range of market leading radios. Suitable for all applications whilst offering exceptional performance, reliability and value.

Two important factors when choosing an antenna are the mounting position and the desired radiating patterns for the terrain in which the antenna is to be used.

MOUNTING POSITIONS

An antenna needs a large uniform metal surface beneath the radiating elements to perform correctly. This is referred to as a 'ground plane'. Therefore the best position to install an antenna is in the centre of a metal roof, however, this is not always possible and installation on a bull bar or mirror mount is often necessary. In this case a 'ground independent' antenna should be used to give the antenna its desired radiating pattern without a metal ground plane.

THE ANTENNA TO SUIT THE TERRAIN

Lower gain antennas are more suited for hilly terrain where reception does not depend on the angle of the antenna, as shown in figure 1 below

RADIATING PATTERNS

It is important to understand the relation of an antenna's gain to its radiating pattern, as shown in figure 2 below. As the electrical design of the antenna is modified to increase the gain, the omnidirectional pattern is squashed in a vertical plane and is enhanced in a horizontal plane. This expands the signal's coverage. A high gain antenna will therefore give increased coverage on flat terrain but the elevation will be limited making it unsuitable in mountainous regions.

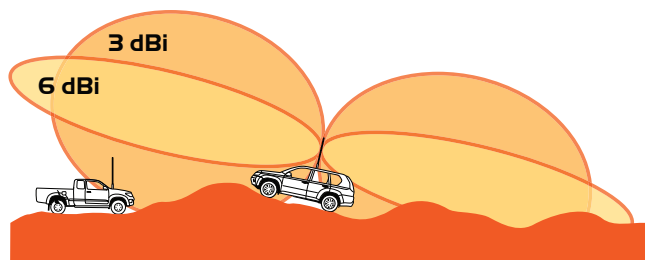


FIGURE 1

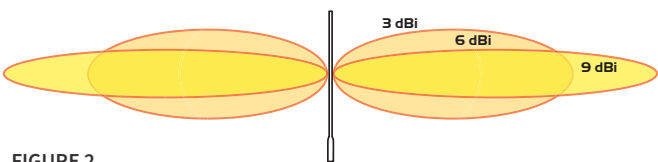


FIGURE 2



SAFETY & COMMUNICATION



TX4500S

DIN size fully featured 5 watt UHF CB radio

The TX4500S is a full-DIN sized radio and is ideal for installations that require this size standard. The DIN mounting kit is supplied and its compact depth design allows for easy installation in confined spaces. The combination of the front facing speaker, large LCD screen and user controls along with the advanced features such as GME's new **ScanSuite** - made possible by the use of Digital Signal Processing - make the TX4500S the radio of choice for many CB consumers.



TX6500S

5 watt IP67 handheld UHF CB radio

Introducing the new TX6500S 5 watt handheld IP67* UHF CB radio, GME's latest powerhouse 477 MHz UHF and the only handheld radio designed and manufactured exclusively in Australia. This radio is rated IP67* water and dust proof, is built rugged with a die-cast aluminium chassis and has a 20 hour* battery life to operate in temperatures of -20 to +60°C. The TX6500S is bred with GME DNA and features **ScanSuite** - a new unique GME technology that will change the way we communicate.



TX3500S

Compact 5 watt UHF CB radio

Synonymous with quality and reliability, the GME TX3500S is one of the most advanced UHF CB radios of its kind. Equipped with GME's newest digital scanning technology - **ScanSuite** - and an impressive feature list that includes Digital Signal Processing, Advanced Signal Management, Dynamic Volume Control and 19 extra receive channels. With CTCSS and DCS this radio ensures more privacy and less interruption.

ScanSuite™ 
faster, smarter scanning

NO MORE INTERRUPTIONS EVER



Introducing the unique ScanSuite™ series of Australian made radios with a no fuss 5 year warranty*. With ScanSuite enabled you can now have continuous uninterrupted conversations no matter where you are.

To learn more visit www.gme.net.au

TurboScan – At more than 40 channels per second, TurboScan enables the radio to scan all 80 channels in under 2 seconds and is the backbone to the ScanSuite scanning technology.

Network Scan – Network Scan allows radios to have uninterrupted communication by dynamically switching to unused channels. Network Scan scans for other radios that share the same CTCSS or DCS tone. When a Network Scan radio detects a signal with no code or the wrong code, radios in the network scan group will switch to another channel to continue transmitting and receiving. This allows for Network Scan enabled radios to continually communicate without interruption.

AutoSkip – When scanning in open or group scan the radio may continuously stop on nuisance channels. These channels may be temporarily skipped or easily removed from the scan cycle without deleting from scan memory.



TX3510S

Compact, fully featured 5 watt UHF CB radio

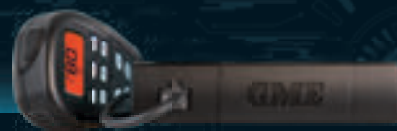
The compact fully featured TX3510S has an impressive list of advanced features. Including the latest in Digital Signal Processing technology, Advanced Signal Management and Dynamic Volume Control, coupled with rugged construction, ease of installation and renowned GME reliability. The TX3510S is now also equipped with ScanSuite to enable uninterrupted communications even on congested channels.



TX3520S

Compact, fully featured remote mount 5 watt UHF CB radio

The TX3520S displays the same rugged construction, comprehensive feature set and reliability as the TX3510S but with a remote head for vehicles with limited cabin space. Now equipped with ScanSuite, the TX3520S also enables uninterrupted communications with a group of like radios.



TX3540S

Compact and fully featured remote mic 5 watt UHF CB radio

Bringing together all of GME's unique technology, including ScanSuite – the TX3540S is the flagship of the S series family. It comes with the MC524B fully functional LCD remote controller microphone with full spectrum backlighting, tactile buttons and an ergonomic design for comfortable extended use.

The radio comes with 95 user programmable receive frequencies to listen in on local emergency services to keep safe and stay in touch.



TRUST AUSTRALIAN MADE
The only Australian manufacturer of UHF CB radios

5 YEAR WARRANTY*

*Does not apply to the TX6500S handheld radio
*See website for details